



Volume 2
Issue 4
Fall /
Winter
2008/09

Unwanted Invaders

Inside this issue:

An Update from ISCM...	1
Invasive Plants Inventory and Mapping with "PRIPS"	2
2009 Calendar <i>Unwanted Invaders - New Threats!</i>	4
ISCM's 1st Annual Stakeholder Workshop and AGM	4
Funding Sources and Partners	5
Upcoming Events	6

Now Here!



Contact ISCM to receive a copy of the 2009 Calendar *Unwanted Invaders - New Threats!*

WANTED!

Do you have an invasive species success story you would like to share?

ISCM is currently looking for articles to publish in our Newsletter. For more information, please contact the ISCM Coordinator.

Invasive Species Council of Manitoba
c/o 5006 Roblin Blvd. Winnipeg, MB R3R 0G7
Ph: (204) 232-6021 Fax: (204) 986-7236
Email: info@invasivespeciesmanitoba.com

An Update from ISCM...

**By Julie Sveinson Pelc
ISCM Coordinator**

Back in December 2006 an invasive species forum for interested stakeholders was held in Manitoba. The current status of invasive species and their management was discussed. Although invasive species, such as purple loosestrife and leafy spurge, have been managed since the 1990s, it was decided that a province-wide collaborative approach that considers multiple species was needed.

Today, the Invasive Species Council of Manitoba (ISCM) is celebrating its successes and its progress over the past two years. ISCM is a non-profit organization guided by its strategic plan with direction by consensus from the Executive Board. We have active representation from a number of agencies and organizations including Ducks Unlimited Canada, Leafy Spurge Stakeholders Group, Manitoba Agriculture, Food and Rural Initiatives, Manitoba Forage Council, Manitoba Conservation, Manitoba Purple Loosestrife Project, Manitoba Water Stewardship, Manitoba Weed Supervisors Association, and Prairie Farm Rehabilitation Administration. ISCM's Terms of Reference and Articles of Incorporation are currently in the process of being developed.

Despite a lack of long-term funding, ISCM has maintained a full-time Coordinator to oversee program activities, prepare funding applications and reports, create education and awareness materials, and deliver outreach and education. With youth employment grants and project funding, sum-

mer students and temporary assistance have been hired for specific program activities.

All funding for ISCM is generated through external sources. Without the support of our funding sources and partners ISCM would not exist. For a complete list of ISCM supporters see Page 5.

Since its formation, the council has created partnerships with many agencies, completed partnership projects, gathered hundreds of stakeholders, and created and distributed awareness products to stakeholders and the public across Manitoba. These include a Best Management Practices for Rights of Way, the Invasive Species calendars for 2007, 2008 and 2009, the Invasive Species in Manitoba: River, Lake and Wetland Invaders A Pocket Field Guide, quarterly Unwanted Invaders newsletters and delivering presentations to various groups across Manitoba.

Currently we are focusing on the development of an Early Detection and Rapid Response (EDRR) strategy and network that will help inform the public about and prevent the introduction of new invasive species. Further development and promotion of our Weed Buster group events will continue into the new year, as well as the continued development of a province wide invasive species database.

For more information or to becoming involved please contact ISCM at (204) 232-6021 or at info@invasivespeciesmanitoba.com.

Invasive Plants Inventory and Mapping with “PRIPS”

By Julie Sveinson Pelc, ISCM Coordinator and Stephen Gietz, ISCM GIS Technician

This past summer, ISCM hired two students (Stephen Gietz and Sheila Herbert-Hosie) with funding from the Manitoba Urban Green Team, Canada Summer Jobs, and Young Canada Works Programs to map invasive plants.

Methods

Data was collected for 14 invasive plants (Table 1) in Winnipeg, Manitoba and the nearby Rural Municipalities (RMs) of MacDonal, Morris, Headingly, and Cartier. Site information, GPS location, infestation distribution and density, and treatment activities were recorded using the Prairie Region Invasive Plant Species (PRIPS) Inventory and Mapping Display datasheet.

Site and infestation data for Winnipeg and the RMs were entered into the online PRIPS database. The PRIPS database is aimed at providing key information to land owners and managers on invasive plants. The website includes an inventory of invasive plants and map display <http://www.crerl.usask.ca/prips/>.

Table 1: Manitoba Invasive Plant “Hit List” for 2008 developed by ISCM.

Common Tansy (<i>Tanacetum vulgare</i>)
Dalmatian Toadflax (<i>Linaria dalmatICA</i>)
Downy Brome (<i>Bromus tectorum</i>)
European Buckthorn (<i>Rhamnus cathartica</i>)
Flowering Rush (<i>Butomus umbellatus</i>)
Himalayan Balsam (<i>Impatiens glandulifera</i>)
Japanese Brome (<i>Bromus japonicus</i>)
Leafy Spurge (<i>Euphorbia esula</i>)
Nodding Thistle (<i>Carduus nutans</i>)
Ox-eye daisy (<i>Leucanthemum vulgare</i>)
Purple Loosestrife (<i>Lythrum salicaria</i>)
Red Bartsia (<i>Odonites serotina</i>)
Scentless Chamomile (<i>Matricaria maritima</i>)
Yellow Toadflax (<i>Linaria vulgaris</i>)

The City of Winnipeg’s natural areas GIS database was used to determine invasive plant occurrences on public land within Winnipeg. Habitat information for over 1000 hectares of publicly owned natural areas is stored in this database. Each site entry contains a general habitat description and plant species list. Public parks, natural areas, low maintenance areas, ditches, and retention ponds that contain invasive plants on the ISCM 2008 “Hit List” were surveyed to verify their occurrence and collect infestation data.

Ward maps showing roadside invasive plant occurrences were provided by the Macdonald Weed Control District for Rural Municipalities of Cartier, Headingly, Macdonald, and Morris. Surveys were conducted along major Provincial Highways and Roads to confirm occurrences and collect infestation data.

Results & Discussion

Winnipeg

Presence of invasive plants was verified at 108 public sites in Winnipeg. Infestation data was entered into PRIPS for 127 invasive plant occurrences in Winnipeg.

The most common invasive plant encountered in Winnipeg’s public natural areas was European buckthorn which typically occurred in riparian forests along the Red and Assiniboine Rivers.

Other common invasive plants found in Winnipeg were leafy spurge, ox-eye daisy, and scentless chamomile (Figure 1A-C).

The first record of red bartsia within Winnipeg was documented near the north perimeter (Figure 1D). Red bartsia is a relatively new invader that was accidentally introduced in the 1950s at the Canadian Armed Forces Base in Gimli, Manitoba. It is serious concern in hay lands, pastures, and

roadsides in the Manitoba Interlake region.



Figure 1: Common invasive plants encountered in Winnipeg [A] European buckthorn, [B] Leafy spurge, [C] Ox-eyed Daisy, and [D] Red bartsia.

Continued from page 2...

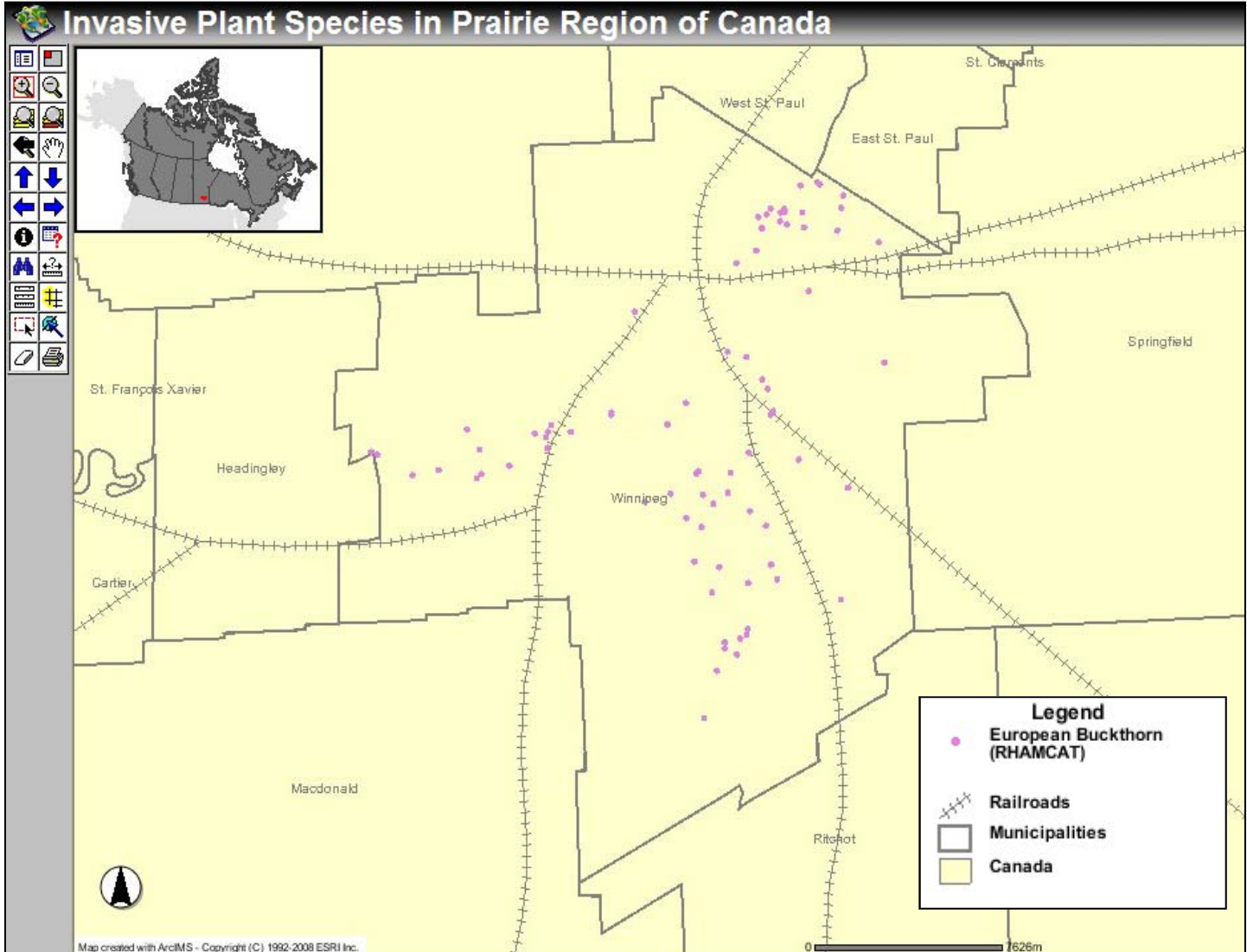


Figure 2: European buckthorn distribution map for Winnipeg, Manitoba (PRIPS 2008).
<http://www.crerl.usask.ca/prips/>

Rural Municipalities

Infestation data was collected and entered into PRIPS for 50 public roadside sites in the Rural Municipalities (RMs) of Cartier, Headingley, Macdonald, and Morris along major Provincial Highways and Roads.

Similar to Winnipeg, leafy spurge, ox-eye daisy, and scentless chamomile were the most commonly encountered invasive species in the RMs.

PRIPS Map Display

Distribution maps for individual, such as European buckthorn shown in Figure 2, or multiple invasive plant species can be viewed online using PRIPS Inventory and Mapping Display.

These maps can be used to help plan and identify priorities in local communities or across the Prairies. A regional view may encourage land owners and managers to look beyond their borders and determine new

threat and potential pathways of invasion.

Future Plans

Next summer ISCM will continue collecting data for PRIPS to establish a province wide digital database. This baseline data is key to monitor changes and treatment efficiency over time as well as increase awareness of invasive plant species.

For more information please contact ISCM at (204) 232-6021 or at info@invasivespeciesmanitoba.com.

2009 Calendar *Unwanted Invaders* – *New Threats!*



The ISCM produced the 2009 “Unwanted Invaders” Calendar to raise awareness and understanding of new invasive species that threaten Manitoba’s natural environment, economy, and society. Each month features an invasive species that poses a new threat to Manitoba. Some of these new invaders are already in Manitoba or on the verge of invading. Since they are not yet wide spread or naturalized or “free-living populations”, early detection and rapid response are essential in preventing their spread.

Invasive species do not respect jurisdictional borders. They can thrive in a variety of different habitats and climatic regions. This calendar will help you become more familiar with invasive species and you will discover how you can help with this global problem.

To get your free copy, please contact ISCM at (204) 232-6021 or at info@invasivespeciesmanitoba.com.

ISCM’s 1st Annual Stakeholder Workshop and AGM

By Stephen Gietz, GIS Technician

On November 20 and 21, 2008, ISCM held its first annual Stakeholder Workshop and AGM in Portage La Prairie, Manitoba. The theme of the



Randy Westbrook from the USGS presenting on ED RR.

two day event was New Strategies for Early Detection and Rapid Response to New Invaders in Manitoba. Day one of the event consisted of a workshop in which Randy Westbrook from the US Geological Survey in North Carolina presented on the U.S. National ED RR System for Invasive Plants, and also a presentation from Cory Lindgren, CFIA, about a Canadian ED RR Framework that the CFIA uses. The two presentations were rounded out with a roundtable discussion at the end of the day about the next steps for increasing ED RR capacity in Manitoba. Some developments from the discussion was the idea of the formation of an ED RR committee. The exact function of the committee has not yet been established since they have not met as of yet.

The AGM took place on the second day. Randy Westbrook was able to present on this day as well, focusing on ED RR, with Cory Lindgren also presenting on an ED RR strategy from a federal perspective. Wendy Ralley from Manitoba Water Stewardship presented on aquatic invasives and where they stand to date, Doug Cattani from MAFRI was able to present on Invasive Plants, and Cheryl Heming, the chair of ISCM finished the presentations with an update on what ISCM has been up to the past 23 months. The AGM ended with the business meeting in which the ED RR committee was established.

For more information please contact ISCM at (204) 232-6021 or at info@invasivespeciesmanitoba.com

Who we are...

The Invasive Species Council of Manitoba (ISCM) is a non-profit organization providing a centralized and coordinated province-wide leadership body adopting a collaborative approach to invasive species in Manitoba.

Vision...

Maintain a healthy, bio-diverse landscape through the prevention, early detection, and education and awareness of invasive alien species management practices in order to eradicate or limit further spread.

ISCM Executive Board* 2008/2009

Cheryl Heming - ISCM Chair

TBA - ISCM Coordinator

Garth Ball - Manitoba Conservation

Doug Cattani - Manitoba Agriculture, Food and Rural Initiatives

Wayne Digby - Leafy Spurge Stakeholders Group

John Johnston - Manitoba Weed Supervisors Association

Ron Moss - Prairie Farm Rehabilitation Administration

Wendy Ralley - Manitoba Water Stewardship

Karen Rempel - Rural Development Institute

Lisette Ross - Ducks Unlimited Canada

Jane Thornton - Manitoba Agriculture, Food and Rural Initiatives

Wybo Vandershuit - Parks Canada

* Other Executive members to be confirmed.

The ISCM would like to thank our funding sources and partners, for we would not exist without the support of:

- Agriculture and Agri-Food Canada - Prairie Farm Rehabilitation Administration
- Agriculture Sustainability Initiative through Manitoba Agriculture, Food and Rural Initiatives
- Assiniboine Watershed Network, City of Winnipeg, Ducks Unlimited Canada, Manitoba Agriculture, Food & Rural Initiatives, and Manitoba Water Stewardship (in-kind support)
- Dow AgroSciences Canada
- ECO Canada
- Evergreen-Unilever Aquatic Stewardship Grant Program
- Invasive Alien Species Partnership Program, a Government of Canada initiative
- Leafy Spurge Stakeholders Group
- Manitoba Agriculture, Food and Rural Initiatives (MAFRI), Agriculture Sustainability Initiative
- Manitoba Purple Loosestrife Project
- Manitoba Urban Green Team, Province of Manitoba
- Manitoba Weed Supervisors Association
- Rural Development Institute, Brandon University
- Service Canada Summer Jobs, Government of Canada

Upcoming Invasive Species Events

January 14, 2009:

ISCM is presenting at the East Kildonan Horticulture Society Meeting in Winnipeg, Manitoba.

January 20 to 22, 2009:

Invasive Plant Council of British Columbia's Annual Public Forum and AGM, "Stop the Spread!" at the Delta Vancouver Airport Hotel, Richmond, BC. www.invasiveplantcouncilbc.ca

January 20 to 22, 2009:

26th Annual Red River Basin Land and Water International Summit Conference takes place at the Fort Garry Hotel in Winnipeg, Manitoba.

January 20 to 23, 2009:

The Annual Manitoba Ag Days taking place in Brandon, Manitoba at the Keystone Center.

January 26, 2008:

29th Annual Interlake Beef Seminar at the Eriksdale Recreation Centre in Eriksdale,

January 30, 2008:

16th Annual South Interlake Beef Seminar at the Teulon Rockwood Centennial Centre in Teulon, Manitoba

February 10 to 11, 2009:

The Manitoba Green Show at the Victoria Inn, Winnipeg, Manitoba. This year will include Landscape Manitoba's AGM, National and Manitoba Awards of Excellence, Speakers that will appeal to landscapers, garden centres, and nursery growers, and Certification testing and a New Product Showcase area www.canadanursery.com

ISCM Coordinator Bids Farewell

After 8 months with the Invasive Species Council of Manitoba, I will be resigning as the Coordinator. I have accepted a position with the Nature Conservancy Canada - Manitoba Region as the Manager of Stewardship Programs starting January 16, 2009 based out Winnipeg. It has been a pleasure working with all the executive members, partners and stakeholders.

Sincerely,
Julie Sveinson Pelc



For more information Contact:

Invasive Species Council of Manitoba

c/o 5006 Roblin Blvd. Winnipeg, Manitoba R3R 0G7

Ph: (204) 232-6021 Fax: (204) 986-7236

E-mail: info@invasivespeciesmanitoba.com